

Gryphon Gazette

Glacier High School Charter

SPECIAL DATES OF INTEREST

- 12/1 @ 2:15 (Oakhurst)
SCCCD rep visits GHS
- 12/12 @ 12:30
ASB Caroling (Oakhurst)
- 12/16 @ noon
Bowling Party (Kingsburg)
- 12/18 @ 6:30
Xmas Party (Oakhurst)
- 12/20-1/4
Winter Break
- 1/1 @ Midnight
New Year's & FAFSA opens
- 1/5 @ 6pm
EMT class session #1
- Late January
Community Awards posted
on glacierhighcharter.org

SEMESTERS COME AND GO CHECKLIST

END OF SEMESTER

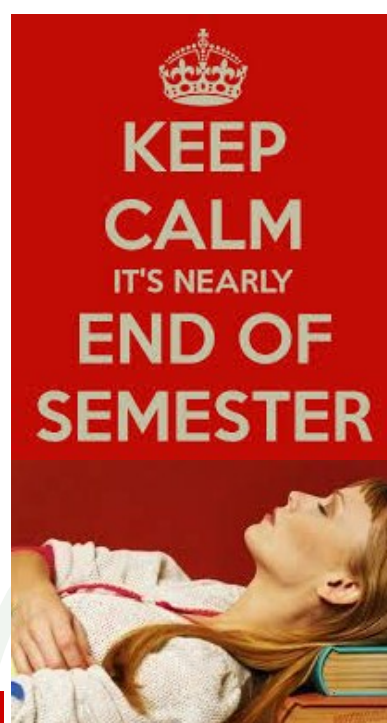
Fall semester has flown by, hasn't it? In case you were wondering, the ending date is officially Friday, December 19th— but there are a number of things that need wrapping up as we approach the Christmas break.



1) Make sure that all remaining course-work has been reviewed/collected, and that final grades and gradebook spreadsheets have been submitted to your charter teacher.

2) Attendance must be turned in promptly this time, since there isn't any grace period available (with school closed two weeks for the holidays).

3) Discuss spring semester course selections and contracts in advance— so you won't fall behind once school starts back on 1/5/2015.



INSIDE THIS ISSUE:

FAFSA— LOOKS LIKE SALSA, BUT LESS HOT	2
CAROLING	2
PAH-TAY (BOWLING)	2
PAH-TAY (EATING)	3
FISHY SCIENCE	3
MORE EATING	3
I-TUNES, U-TUNES, WE ALL-TUNES	4

Seniors: Grad Nite Deposit of \$80 due 12/5/14

IT'S ALL DOWNHILL FROM HERE...

Mountain Home School will, pending snow, again take part in its ski program beginning in January. Glacier students have been known to tag along in the past, so enthusiasts are encouraged to contact John Rumohr (642-1492 ext 19).

Potential volunteer instructors are also encouraged to indicate their interest.

In any case, act quickly because registration is due by Friday, December 12th.

The first ski date is penciled in for Monday, January 12th.

GHS students enrolled in on-site classes should discuss any conflicts/absences with their teachers before committing to this program.



NEW YEAR'S DAY- A BIG DEAL?

Everybody likes the idea of getting a fresh start, and sometimes we simply need to put bad things behind us. New Year's resolutions are classic examples.

But there's another reason, specifically for seniors, to take New Year's Day seriously.

Midnight, January 1 marks the opening of financial aid processing for college students through the Federal program abbreviated FAFSA. This acronym stands for "Free Application for Federal Student Aid."

Most federal and state student aid entities use this application as their primary source in determining grant and scholarship awards.

The deadline for FAFSA applications isn't until early March. So why worry about applying early? Good question.

As soon as FAFSA applications start to come in, money begins to flow out (in the form of grants, awards, scholarships). The old saying, "the early bird gets the worm" applies here.

The pool of available money grows smaller as money goes out, so it is important to not procrastinate. It could cost you!



"The application process wasn't nearly as difficult as I expected..."
anonymous careman

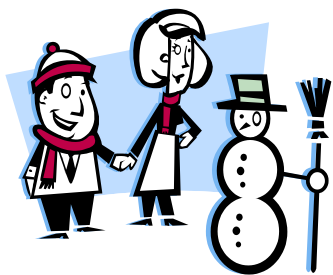
ADOLESCENTS BRING CHRISTMAS SPIRIT TO CONVALESCENTS

As part of its regular class meeting time (12:30-2:00), ASB will venture to the Oakhurst Healthcare and Wellness Center on Monday, December 15th to sing carols to inpatients there.

The Center is Oakhurst's largest assisted living / convalescent hospital facility, and it welcomed this offer of a group visit.

All Glacier students are welcome to support and join this outing. A good singing voice is not a prerequisite- just show up!

The Healthcare and Wellness Center is located just behind Capital Pipe off Highway 49.



"We're practicing arm swings for the bowling party..."

BOWLING DOWN THE FREEWAY?

Glacier Kingsburg will celebrate the end of semester with a bowling party on Friday, December 12th from 12pm-2pm. The location will be the Freeway Lanes in Selma -take the Floral Exit off 99 and work north on Golden State. Cost is a mere \$15; this figure includes bowling, shoes, pizza and drinks).

Sign up with Mrs. Garcia at the Kingsburg site,

or call 897-2321



A PARTY YULE NOT WANT TO MISS

The annual ASB Christmas Party is scheduled for Thursday, December 18th from 6:30-9:00 at the Oakhurst campus.

All GHSC students (and approved guests) are invited to attend. [Guest pass](#) forms are found on the school website.

Seasonal refreshments will be on hand, and a gift exchange is optional for those who come. Limit gifts to \$5-10 value.



GHS STUDENTS STUDY "STARFISH WASTING" DISEASE

What do moon phases have to do with oceanic invertebrates? The gravitational pulls of the moon and sun on the Pacific Ocean create exceptionally low tides for brief periods. This happens during both the full moon and new moon phases.

Glacier High School students are taking advantage of these very low tides to study bizarre organisms which usually hide under the waves. Kooky Habarad, Kayla

Hawkins and Katy Park have taken up the charge to learn more about the origin and effects of a Pacific coast phenomenon called Starfish or Sea Star Wasting Disease. Over twenty other students (non-GHS) are also working with UC Santa Cruz professor emeritus Dr. John Pearse and the LiMPETS (Long-term Monitoring Program and Experiential Training for Students) program. This program has

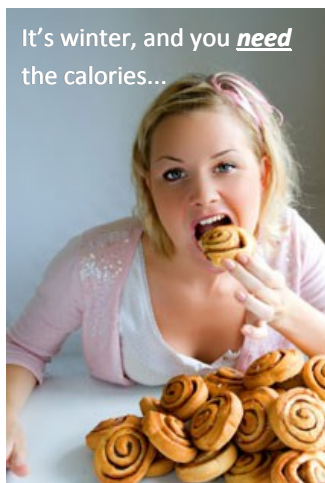
included more than 5500 students and teachers since 2002.

In this case, GHS students found out about the research of this disease, and decided to get involved.

The LiMPETS program provided excellent resources and helped make actual research and collection of high quality

Continued , see Starfish p. 4 ➡

The California Academy of Sciences has awarded its highest honor, the Fellows' Medal, to John Pearse, professor emeritus of ecology and evolutionary biology at UC Santa Cruz.



CINNAMON (OR WAS THAT "SIN, MAN!") ROLLS GO ON SALE

These babies are so rich you are guaranteed to put down more calories than ever before. Whether you can afford to or not- that's between you and your doctor.

Generous trays of six massive rolls (count 'em! what's 2 x 3, kids?) are on sale at both Kingsburg and Oakhurst for \$20 a tray. That's a little over

\$3 apiece- with the proceeds going towards graduation ceremony costs for next year. The rolls are frozen and have a shelf life good till the zombie apocalypse, but we know they won't last quite that long.

Remember, it's all about supporting this year's senior class, and has nothing to do with your personal dietary cravings. Whatsoever. Not.





Kris Hawkins
GHSC junior
YHS Band

GLACIER STUDENTS PROVE INSTRUMENTAL IN YHS BAND

This year, more than any other, Glacier students are making a huge impact in the Yosemite High Band. With a cooperative arrangement in place, each school benefits from a policy allowing “concurrent” enrollment at both sites.

Cristian Mendoza, a junior, is 1st seat trumpet and high brass section leader. He also serves as band webmaster.

Kris Hawkins, another junior, is 1st seat alto sax and assistant drum major.

Laney Wilkinson, sophomore, is 1st chair flute-piccolo and co-captain of the woodwind section.

Kayla Hawkins, a junior, helps as a banner carrier during marches, and also assists with uniform management.

Emily Anderson, a GHS student at the start of the year, has since transferred to YHS. She holds first seat trombone.

To be involved in YHS band, time commitments are daunting. Besides regular class time, many game nights and marches consume weekend time, and school night practices are not at all uncommon. Music camps also are a requirement during vacations, taking from several days to a couple of weeks.

This year, the band traveled to marching events in Orange Cove, Merced, and Fresno, and participated in Heritage Days parade here in Oakhurst.

Other major non-marching events include seasonal concerts and the fundraising extravaganza “Night on the Town.”

Many of our GHS musicians are additionally involved in YHS Jazz Band and/or Community Band, each with its own additional schedule of practices and engagements.

Kudos to Glacier students filling important roles in the YHS band program!

STARFISH DISEASE, cont.

field data a reality. Data was collected at Natural Bridges State Park (in Santa Cruz).

Approximately twenty Glacier High School students (both Oakhurst and Kingsburg) previously attended a fieldtrip to the Monterey Bay Area to take part in a “Discovery Lab” at the Monterey Bay Aquarium. On this trip, students collected data at Point Pinos (Monterey). An added bonus of this trip was a campus tour of Cal State University, Monterey Bay.

Approximately two more fieldtrips next semester are in the planning phase. Certain species of starfish seem to be especially prone to infection. The GHS group has a unique opportunity to document the decimation- and hopefully, recovery- of

a species known as *Pisaster ochraceus*. Their collected field data is entered into a website back to 2002.

The students are getting better at identifying invertebrates and species of algae- and always need help collecting field data in the short time span of a low tide.

If you are interested in learning more about the LiMPETS Program, you may want to visit:

<http://limpetsmonitoring.org>

And for more information on Starfish Wasting Disease, check out:

[Sea Star Wasting Disease](#)



If you'd like to take part in this fascinating study, get away to the coast, and have fun simply learning, contact GHS teacher Matthew Englund at 642-1422 x21.